

# The Exinda 8060

Unified Performance Management for Headquarters/Data Centers



## The Exinda 8060

Designed for headquarter offices and data centers, the 8060 model expands to support up to 5 Gbps worth of traffic and up to 100,000 users.

This appliance has dual power supplies and RAID 10 support. Built upon Exinda's new 64bit architecture, and featuring a multi queue network interface controller (NIC) combined with a multi threaded operating system (OS); this new model offers scalability and performance at a price that satisfies even the most cost-conscious buyers.

## The Challenge

Everyday more and more data is being pushed across our networks. Increased growth and reliance of web based applications, VoIP, streaming video and Internet usage have congested our networks and made them unreliable. Network users are spending more and more time waiting at screen (TWAS) as applications compete for finite resources over stressed, over-run networks. This proliferation of traffic has degenerated our networks' speed and performance and resulted in productivity losses.

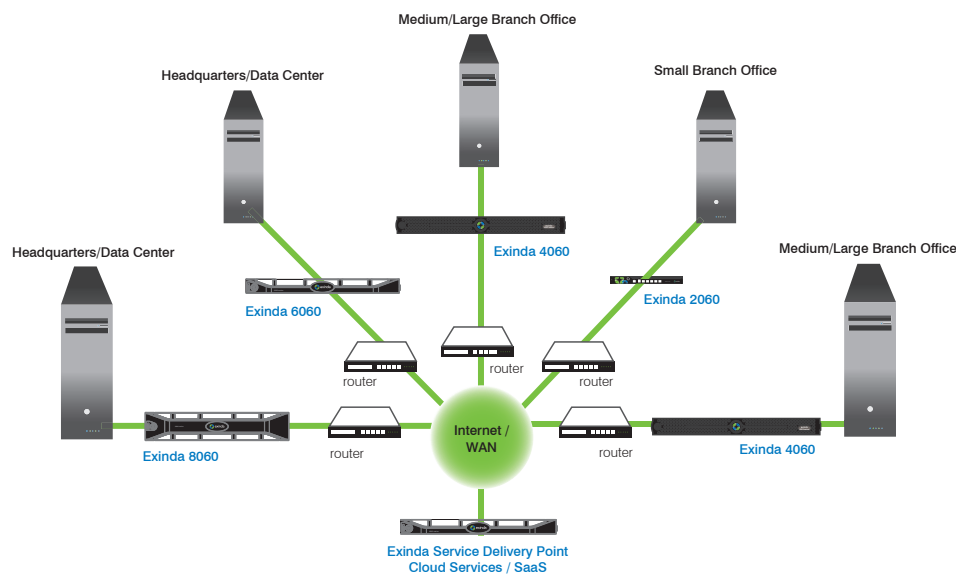
The challenge faced by IT professionals today, is how to gain visibility into the network, identify what applications and users are causing the congestion and put policies in place to ensure applications and data run smoothly over your network, despite the ever-increasing demand?

## The Solution

Exinda provide users with the best network experience possible by maximizing the speed and efficiency of applications over the network.

Exinda's unified performance management (UPM) solution brings together a suite of advanced, best-of-breed, visibility, traffic-shaping and WAN optimization technologies into a single, easy to-use appliance designed to improve network productivity.

Exinda is the only unified performance management solution on the market. Controlled through a seamlessly integrated, unified management console, Exinda reduces costs, increases revenue and allows you to get the most out of your network.



## Features & Benefits

### Visibility

Provides insight into network activity, usage and performance. Gives you the information you need to keep your network operating at peak performance

- Layer 7 Classification
- Heuristic Classification
- URL Classification
- Drill Down Capabilities
- Real Time Monitoring
- Top Talkers/Top Conversations
- Active Directory User ID
- Anonymous Proxy Detection
- Application Response Time
- Service Level Agreements
- Citrix Published Applications
- Automated PDF Reporting

### Control

Maximize network resources to the needs of your organization through comprehensive control over network traffic without placing heavy-handed restrictions on users.

- QoS / Dynamic per IP User
- Bandwidth Management
- Traffic-shaping
- Prioritization
- Active Directory Integration

### Optimization

Rapidly, turn understanding into action that drives network performance, improves the user experience, and optimizes productivity.

- Layer 4 TCP Optimization
- Layer 7 Application Acceleration
- Universal Caching
- Compression
- Intelligent Acceleration
- Peer Auto-Discovery



## Exinda 8060 Hardware Specifications

|                                      |  |
|--------------------------------------|--|
| Form Factor                          | 19" 2U rack mount  |
| Dimensions                           | 443 x 86 x 681 mm, 17.44" x 3.40" x 26.80"                                   |
| Weight                               | 26.1 kg / 57.52 lb   |
| CPU                                  | 2 x E5530 Xeon Processor, 2.4GHz 8M Cache, Turbo, HT, 1066MHz Max Memory     |
| RAM                                  | 12GB Memory (6 x 2GB), 1333MHz Dual Ranked UDIMMs for 2 Processors           |
| HDD                                  | 6 x 500 GB 7.2K RPM Near Line SAS 3.5" Hot Plug Hard Drive (RAID 10)         |
| Data Store / Cache Size              | 1.2TB  |
| NICs (default)                       | 4 x 10/100/1000 copper (onboard) + 2 x 10/100/1000 copper bypass (slot 1)    |
| NICs (expandable to)                 | 4 x 10/100/1000/10000 copper (onboard) + 16 x 10/100/1000/10000 copper/fiber |
| Bridges/Bypass Pairs (default)       | 1  |
| Bridges/Bypass Pairs (expandable to) | 8  |
| Interface NIC Slots                  | 4  |
| Console                              | RS-232 male DB-9   |
| Power Supply Type                    | Dual Internal, Hotswap   |
| Power Rating                         | Dual power supply (570W) - Redundant Auto Ranging (100V~240V)                |
| Environment                          | 0-40C, storage temp 20-80C relative humidity 0-90% (non-condensing)          |
| Approvals                            | CE,FCC, Certified/RoHS   |

## Software Specifications

### x700 Software Visibility & Control

### x800 Software Visibility, Control & Optimization

| Licensed Bandwidth (full duplex) | 100       | 250       | 500       | 1G        | 2.5G      | 100     | 155     |
|----------------------------------|-----------|-----------|-----------|-----------|-----------|---------|---------|
| Max. Device Throughput (Mbps)    | 10,000    | 10,000    | 10,000    | 10,000    | 10,000    | 10,000  | 10,000  |
| Max. Concurrent Flows            | 2,048,000 | 2,048,000 | 2,048,000 | 2,048,000 | 5,120,000 | 512,000 | 512,000 |
| Max. L7 New Connection Rate      | 6,000     | 6,000     | 6,000     | 6,000     | 6,000     | 6,000   | 6,000   |
| Reports (PDF)                    | 80        | 80        | 80        | 80        | 80        | 40      | 40      |
| SLAs                             | 250       | 250       | 250       | 250       | 250       | 250     | 250     |
| ARM Objects                      | 30        | 40        | 50        | 50        | 50        | 25      | 25      |
| Policies                         | 2,048     | 2,048     | 2,048     | 2,048     | 2,048     | 2,048   | 2,048   |
|                                  |           |           |           |           |           | 6,000   | 7,000   |
|                                  |           |           |           |           |           | 100     | 155     |
|                                  |           |           |           |           |           | 500     | 1,000   |
|                                  |           |           |           |           |           | 1.5     | 1.5     |
|                                  |           |           |           |           |           | 1.2     | 1.2     |

## About Exinda ®

Exinda is a proven global supplier of WAN Optimization and Traffic Shaping products. The company has helped over 1,500 organizations in 55 countries worldwide to reduce network operating costs and ensure consistent application performance over the WAN. The Exinda Unified Performance Management (UPM) solution encompasses application visibility, control, optimization and intelligent acceleration – all within a single network appliance that is affordable and easy to manage.

**North America**  
+1 877 219 0603  
[info.americas@exinda.com](mailto:info.americas@exinda.com)

**EMEA**  
+44 808 120 1996  
[info.emea@exinda.com](mailto:info.emea@exinda.com)

**Asia Pacific**  
+61 3 9415 8332  
[info.apac@exinda.com](mailto:info.apac@exinda.com)